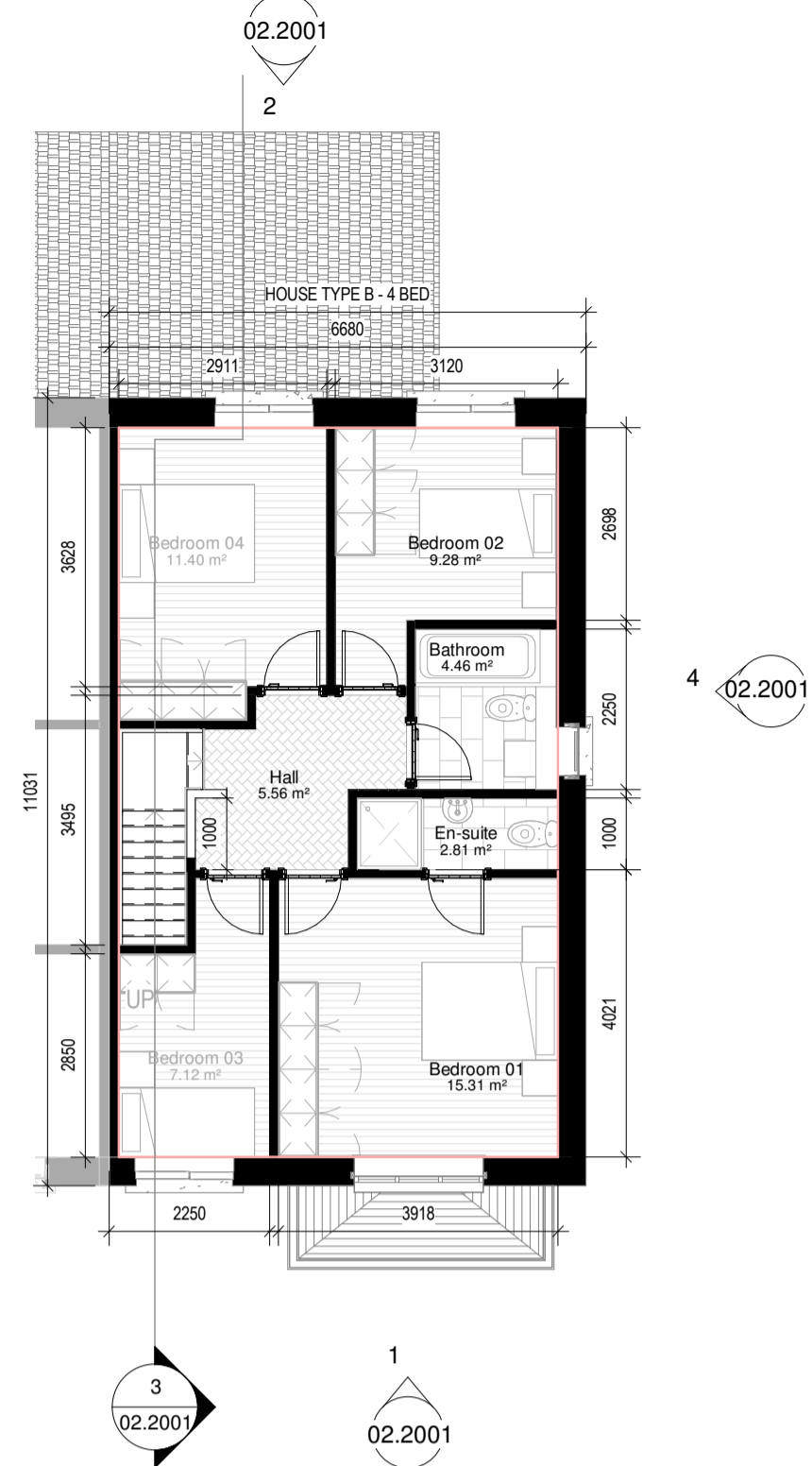


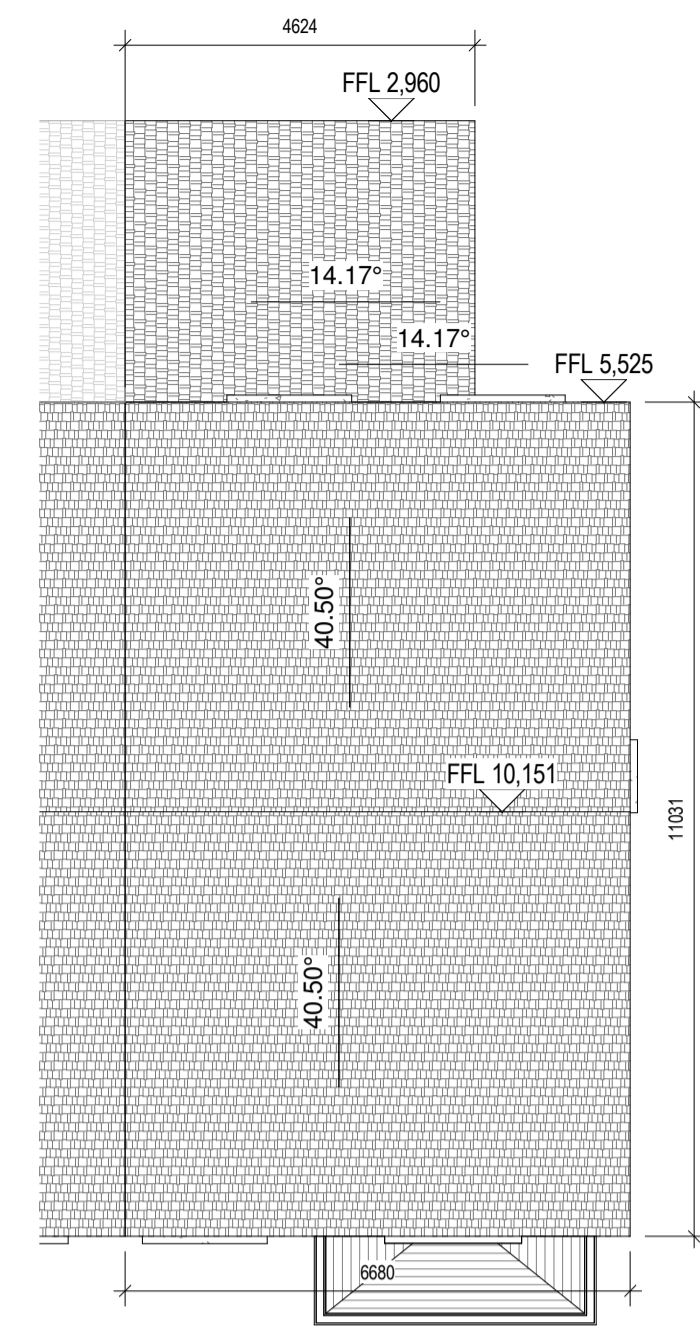
L00 4Beds\_GA Floor Plans\_L00

1: 100



L01 4Beds\_GA Floor Plans\_L01

1: 100



5 RIDGE LINE

1: 100

ROOM SCHEDULE		
Level	Name	Area
00_FLOOR	Hall	11.35 m²
00_FLOOR	Kitchen / Dining	37.92 m²
00_FLOOR	Living	17.31 m²
00_FLOOR	Storage	2.50 m²
00_FLOOR	Utility	3.79 m²
00_FLOOR	W.C	2.18 m²
01_FIRST FLOOR	Bathroom	4.46 m²
01_FIRST FLOOR	Bedroom 01	15.31 m²
01_FIRST FLOOR	Bedroom 02	9.28 m²
01_FIRST FLOOR	Bedroom 03	7.12 m²
01_FIRST FLOOR	Bedroom 04	11.40 m²
01_FIRST FLOOR	En-suite	2.81 m²
01_FIRST FLOOR	Hall	5.56 m²

4 Beds House	
Name	Area
4Bed-L00	75.69 m²
4Bed-L01	62.79 m²
Total	138.48 m²

**Walls**  
Selected clay bricks to varying colours as defined in the different character areas as indicated, painted nap sand cement render, exposed plaster bands around external opens / lintels. Concrete or metal cills, lintels or cappings as indicated on elevations.  
1 Facing Brick 1 - Red / Brown Blend with flush grey mortar  
2 Facing Brick 2 - Grey brick with recessed dark grey mortar  
3 Facing Brick 3 - Light Buff brick with recessed grey mortar  
4 Random rubble stone cladding  
5 Sand / cement nap finish to external leaf of blockwork, paint then applied.

**Windows**  
6 Windows to be aluminium double glazed windows. External doors to be high security impact resistant timber half doors to EN 1627 and level access threshold to approved colour. Obscure windows to bathrooms and where overlooking adjoining amenity spaces as indicated on elevation drawings.

**Roof**  
7 Bulwax flat concrete roof tiles, fixed to timber battens on vapour permeable roofing underlay, on timber / steel roof structure to a suitable roof pitch manufactured in compliance with E.N. 490: 2005.  
8 Low pitch roof or canopies to be either Single ply membrane Tropic type membranes or select pressed metal roofing with standing seams.  
9 Rainwater goods, downpipes etc. to be Aluminium Alloy.  
10. Battens/railes to be painted mild steel uprights.

- WT1**  
Wall Type 1 - Selected dark red brick with grey mortar
- WT2**  
Wall Type 2 - Selected black brick with grey mortar
- WT3**  
Wall Type 3 - Selected buff brick with grey mortar
- WT4**  
Wall Type 4 - Random rubble stone cladding
- WT5**  
Wall Type 5 - Painted render nap finish



1 FRONT ELEVATION

1: 100



2 REAR ELEVATION

1: 100



4 SIDE ELEVATION

1: 100



3 Section 1

1: 100



Visualisation of semi-detached 4 bed house. ( Not to scale.)

**Notes:**  
- Do not scale from this drawing. Use figured dimensions in all cases.  
- Verify dimensions on site and report any discrepancies to the Architect immediately.  
- This drawing is to be read in conjunction with the Architect's Specification.  
- © This drawing is copyright and may only be reproduced with the Architect's permission.  
**Drawing Notes:**  
Refer to windows, doors and curtain walling schedules for more information on details and types. Refer to all other referenced architectural drawings for more information.  
Refer also to all other consultants drawings, specifications, reports and schedules including: Wash Goodfellow for structural and civils.  
Renaissance for MEP information, JGA for fire strategy information, Ryan & Associates for DAC information, AT Urbanism & Landscape for landscape plan boundary details & Amplitude Acoustics for Acoustics.

Rev.	Date	Drawn	Issue for Plann	Details of Issue / Revision
A	SEPT 21	A.R.	Issue for Plann	

**reddy architecture +urbanism**

Dartry Mills,  
Dartry Road  
Dublin 6,  
D06 Y0E3

T: +353 (0)1 498 7000  
W: www.reddyarchitecture.com  
E: info@reddyarchitecture.com

Client Details:  
**Voyage Property Limited,**  
Ashbourne Hall,  
Dock Road,  
Limerick.

Project Details:  
**Greenpark SHD**  
Limerick  
House Type B - 4 Bed

Job No. <b>P20-133D</b>	Sheet Size: A1_	Scale @A1: 1:100
Issue Date: SEPT 21	Drawn By: A. Roche	Reviewed By: M.Freaney

Status	Purpose of Issue
S02	3.0 Planning Application

Project-Originator-Zone-Level-Type-Role-Classification-Number Revision  
20133-AU-ZZ-DR-A-02.2001 A